A large, light gray, stylized graphic of the letter 'Q' is positioned on the left side of the page, partially overlapping the text area.

# INEWS INTEGRATION CONFIGURATION GUIDE

**ALWAYS IN FRONT.**  
Autocue

Autocue and QTV have been serving the broadcast industry since the mid-1950s when QTV in New York and Autocue in London supplied the very first prompters via their rental divisions.

**Creating broadcast history.** The two companies merged in 1984 under Autocue Group and, with the introduction of the QSeries family of software, became the only company to offer the television industry a single solution for all transmission, newsroom, scripting and prompting requirements. QTV forms the Americas division of Autocue Group's prompting sales and rental services.

**Prompter of choice around the globe.** Autocue Group is known worldwide for its service and dependability, serving such prestigious clients as the BBC, Bloomberg, NBC and CNN. The Group's prompting solutions are compatible with all newsroom systems on the market and are in use worldwide by broadcasters, production professionals, government facilities and corporate producers requiring excellence in prompting and newsroom automation solutions.

---

For further information, please visit:

[www.autocue.com](http://www.autocue.com)

# Table of Contents

	<b>Table of Contents .....</b>	<b>iii</b>
	<b>Preface.....</b>	<b>v</b>
	1.1: About this guide.....	v
	1.2: Audience .....	v
	1.3: How to use this guide .....	v
	1.4: Associated documentation .....	v
	1.5: Copyright information .....	vi
	1.6: Disclaimer.....	vi
<b>1</b>	<b>Configure QMaster for iNews Integration.....</b>	<b>3</b>
	1.1: Configure the Autocue prompting client .....	3
	1.1.1: Check integration is licensed.....	3
	1.1.2: Create or modify an iNews server connection .....	4
	1.1.3: Configure QMaster to iNews connection .....	6
	1.1.4: Troubleshoot iNews interface performance .....	9
<b>2</b>	<b>iNews Integration Configuration .....</b>	<b>11</b>
	2.1: Configure iNews server .....	11
<b>3</b>	<b>iNews Scripts in QMaster.....</b>	<b>13</b>
	3.1: Select runorder to prompt.....	13
<b>4</b>	<b>Sales and Support Information .....</b>	<b>15</b>



# Preface

## 1.1: About this guide

This guide provides:

- an overview of configuring the iNews interface to QMaster.
- information about the operation of the QMaster software

QMaster is part of Autocue's QNxt application suite.

## 1.2: Audience

This guide is for operators and technicians wishing to set up and operate a newsroom interface to QMaster. This guide is suitable for novices as well as expert users of the product line from Autocue.

---

**NOTE:** The only prerequisite of this guide is that you should be familiar with using the Microsoft® Windows operating environment.

---

## 1.3: How to use this guide

It is recommended that you follow the step-by-step procedures for setting up a newsroom interface from beginning to end.

Other non-procedural information in this guide can be used for reference purposes.

## 1.4: Associated documentation

This document describes the configuration of the interface between the QMaster application and a newsroom automation system.

For detailed information about installing and operating QMaster, please refer to the user documentation for that product.

If you are using this software with an Autocue on-camera unit please also read the installation and operating manuals for that equipment.

---

## 1.5: Copyright information

©2007 Autocue Group Ltd. All rights reserved.

All information about Autocue software, hardware and accessories—including company and brand logos—contained in this guide is protected under international copyright conventions.

No part of this publication may be reproduced, stored in a retrieval system, or transmitted in any recording or otherwise, without prior permission of **Autocue Group Ltd.**

All third-party software or hardware, including logos, referenced within this guide is copyright of the respective owners.

## 1.6: Disclaimer

**Autocue Group Ltd** reserves the right to revise this publication and to make changes in its content without obligation of **Autocue Group Ltd** to notify any person or persons of such revision.

## SECTION 1: Configure QMaster for iNews Integration

### 1.1: Configure the Autocue prompting client

The Autocue prompting computer must be setup for receiving data from your iNews server.

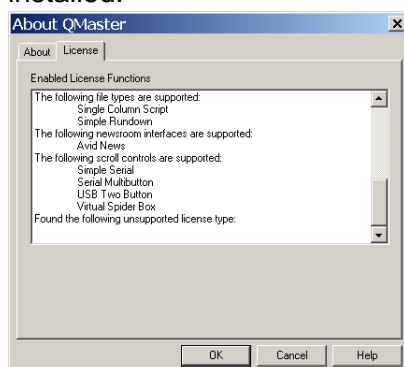
#### 1.1.1: Check integration is licensed

After completing the installation of QMaster, ensure that the iNews interface has been correctly licenced.

1. From the main menu bar, select Help >> About and then click the License tab.



2. Scroll down the entries to check that the iNews interface has been installed.

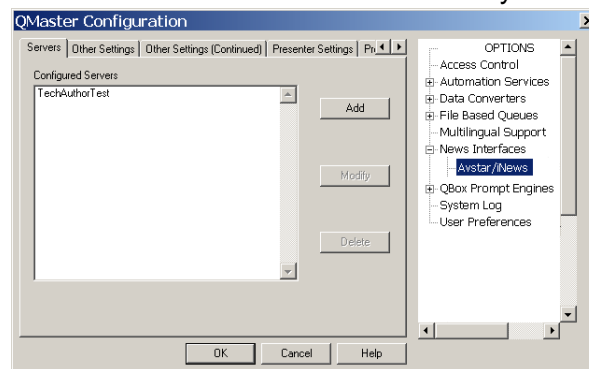


## 1.1.2: Create or modify an iNews server connection

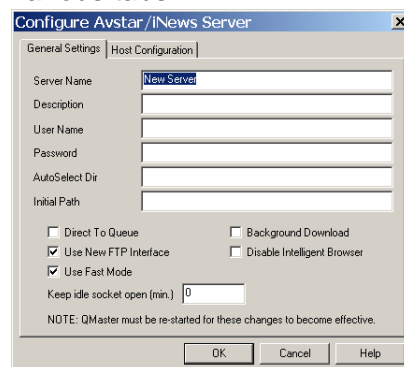
Use the following steps to configure how QMaster and an iNews server communicate.

**NOTE:** A separate profile must be created for every iNews server set to which you wish to connect.

1. From the QMaster main menu bar, select **Tools >> Options... >> News Interfaces**.
2. Scroll down and select the **iNews** entry.



3. Click **Add** and enter the appropriate information in the fields on the various tabs.



**Server Name** is a reference name, **NOT**

**Description:** Use this box to enter the details of what the queue is used for, for example 'Sport Queue'.

**User Name:** In order to connect to iNews via QMaster it is necessary that you are a user on the iNews system. Enter your iNews user name here along with your login password.

**AutoSelect Dir:** This is used to open a specific directory location when opening iNews, if it is left empty you will go to the root directory. For this option to become available ensure that the 'Direct to Queue' checkbox has not been selected.

**Initial Path:** This is used to get to a specific directory folder when opening iNews.

---

**NOTE:** When entering a file path use the following syntax  
'sports.Runorder.today.', the syntax starts and is separated  
by dots (not backslashes)

---

**Direct to Queue:** If this option has been checked then the AutoSelect Dir path will be greyed out and QMaster will use the path specified in the Initial Path box when searching for iNews runorders.

**Use New FTP Interface:** There are two ways that the iNews interface uses to communicate. One is through the Windows FTP module; the other is through an FTP kernel: the "new" ftp interface, this is the recommended interface and is selected as default.

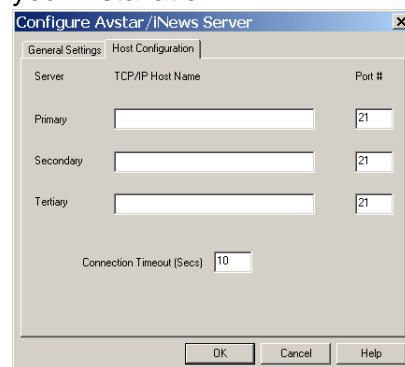
**Use Fast Mode:** This will only work with the new ftp interface. When enabled, all directory scan operations work between 10% and 500% faster depending on the speed of the iNews servers and the network bandwidth.

**Background Download:** If this option is selected, it allows you to continue editing scripts while QMaster searches and downloads runorders and scripts. In addition, if this option is selected, you are able to start prompting before all of a runorder has been downloaded.

**Disable Intelligent Browser:** The default setting for this feature is disabled. QMaster analyses the content of iNews folders to determine whether they are folders or runorders. While this process takes longer, it provides a clearer view of available material.

**Keep Idle Socket Open (min):** This is a timeout period to prevent network connections being closed if you are using a low bandwidth LAN or if there is heavy network traffic.

4. Click the **Host Configuration** tab and enter the information relevant to your installation.



iNews servers are usually clustered in groups of three. You can enter the IP addresses of the machines in a cluster in the appropriate fields. If there is any difficulty connecting to one server in the cluster, QMaster will automatically switch to another.

---

**NOTE:** If you have more than one iNews server cluster, a separate profile must be created for cluster.

---

5. When you have entered the required server information, click on the OK button. The server name entered will be displayed in the Configured Servers list.
6. Repeat this process for each iNews server you will access from QMaster.

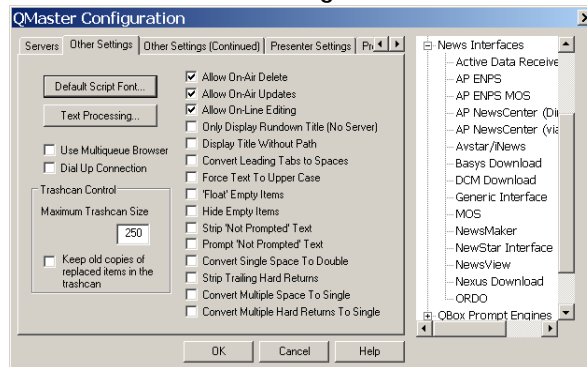
**Amend connections.** At any time, if you need to change an existing connection, select Tools >> Options... >> News Interfaces to open the list of iNews servers. Select the required server and click Modify to access the required fields.

### 1.1.3: Configure QMaster to iNews connection

After you have created a connection to an iNews server, you will need to configure how QMaster processes the information from it.

The following procedure outlines configuring the connection.

1. Click the Other Settings tab.



2. Make the required selections from the list of parameters shown.

**Default Script Font:** Click on this button and select the font you wish to be used in all your downloaded iNews scripts.

---

**NOTE:** A font size between 80 and 100 is recommended.

---

**Maximum Trashcan Size:** Specify the maximum number of items that can be stored in the QMaster trashcan (the default is 250).

**Keep old copies of replaced items in trashcan:** By selecting this option, old copies of updated items will be kept in the trashcan.

**Convert a Tab:** Enter a value to specify the number of spaces used when hitting the Tab key.

**Convert String to Marker:** By entering a word or character in this box, any occurrences of this word or character within the imported text will be

converted into a marker.

The following three parameters allow for alterations made to a runorder or script on the iNews server to be automatically reflected in the QMaster prompt output:

**Allow On Air Delete:** Items deleted from a runorder on an iNews server will be automatically deleted from the QMaster runorder.

**Allow On Air Updates:** Updated items on iNews will be updated on QMaster.

**Allow On Air Editing:** QMaster can edit sent items. If this is not ticked then sent items can only be edited in panic mode.

**Only Display Rundown Title:** If this option is selected QMaster will display the queue path as the rundown title; otherwise it will display the iNews queue path.

**Convert Single Spaces To Double:** Single spaces in a script will be converted to two spaces.

**Dial Up Connection:** This will change the update checking time.

**Force Text To Upper Case:** Changes all received text to upper case.

**'Float' Empty Items:** If this option is selected, any empty items (without script) received will automatically be put on hold.

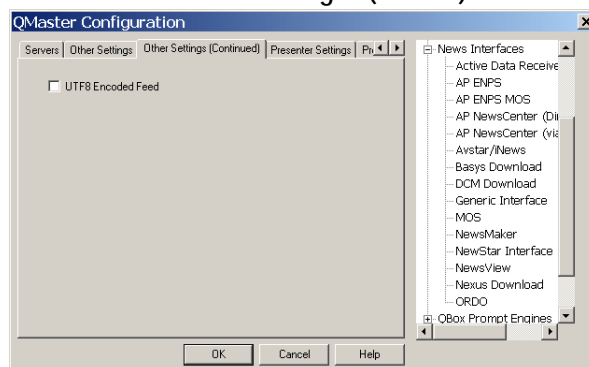
**Strip 'Not Prompted' Text:** If this option is selected then text that has been marked, as Not Prompted will be removed from the downloaded rundown.

**Prompt 'Not Prompted' Text:** If this option is selected then text marked Not Prompted will be prompted.

**Convert Single Space to Double:** If this option is selected then single spaces within scripts will be converted to double spaces.

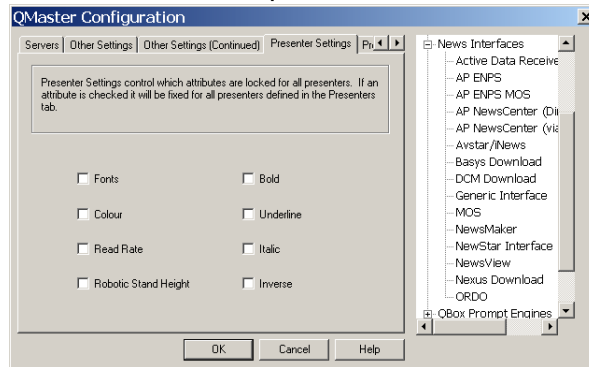
**Strip Trailing Hard Returns:** This option will remove any extra hard returns at the end of a script.

3. Click the **Other Settings (cont.)** tab.



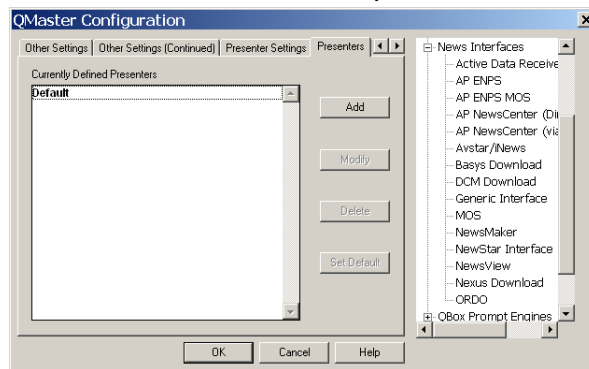
4. If the feed from the iNews server contains Unicode characters that need to be correctly interpreted, select the **UTF8 Encoded Feed** checkbox.

5. Click the **Presenter Settings** tab to specify which parameters may be set for an individual presenter.



**NOTE:** Parameters that are not checked are fixed for all presenters.

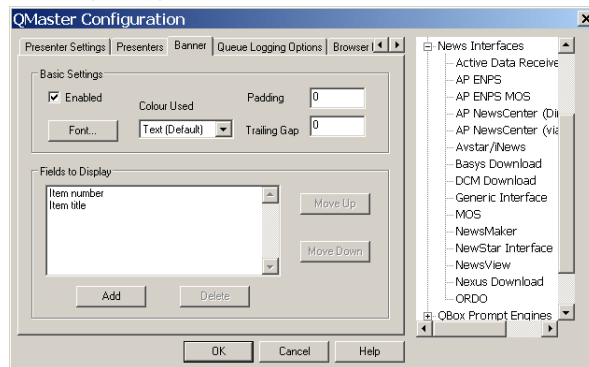
6. Click the **Presenters** tab to display a list of presenters currently available for inclusion in scripts.



7. For details about creating and modifying Presenters, refer to the QMaster User Guide, section 8.5: Presenters.

Presenter profiles created via the iNews interface are automatically added to the runorders and scripts downloaded from the iNews server.

8. Click the **Banner** tab to change the parameters defining the appearance of the prompter banner.



9. Select **Enabled** if you want information to be included at the beginning of each item in a prompted script.

Enter a value in the **Padding** field to increase the thickness of the banner. The values in the **Trailing Gap** field increases the distance between the

banner and the first line text in the script.

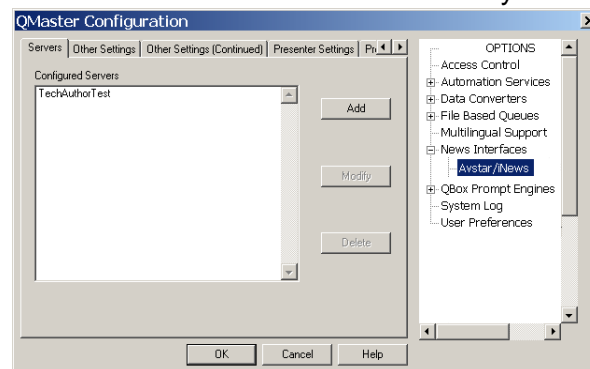
The **Fields to Display** panel lists the fields from the runorder layout that are included in the banner. Item number and Item title are included as default. Select an entry in the list and click the **Move Up** or **Move Down** button to change the order in which they are displayed. Click **Add** to display a list of fields available for inclusion in the banner.

## 1.1.4: Troubleshoot iNews interface performance

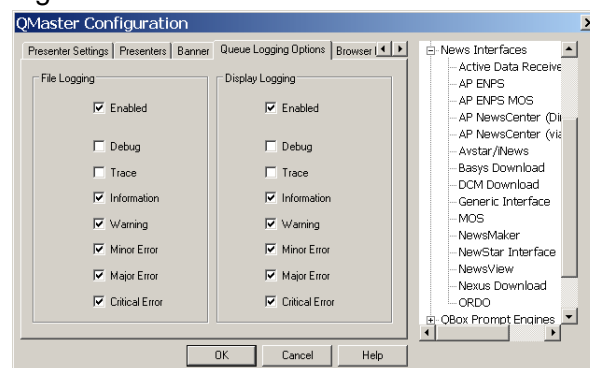
If you encounter difficulties at any stage when downloading iNews scripts and runorders, you can set up a log of QMaster actions and performance which can be used by the Autocue Technical Support team to establish the cause.

### Queue logging.

1. From the QMaster main menu bar, select **Tools >> Options... >> News Interfaces**.
2. Scroll down and select the **iNews** entry.



3. Click the **Queue Logging** tab to select information to be included in the log.

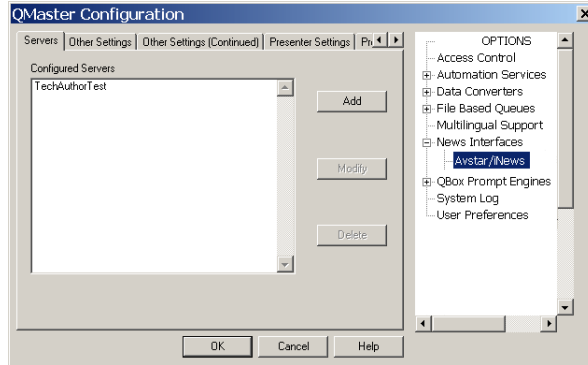


4. Select the appropriate **Enabled** checkbox depending on whether you want the information saved to a file or displayed on screen or both.

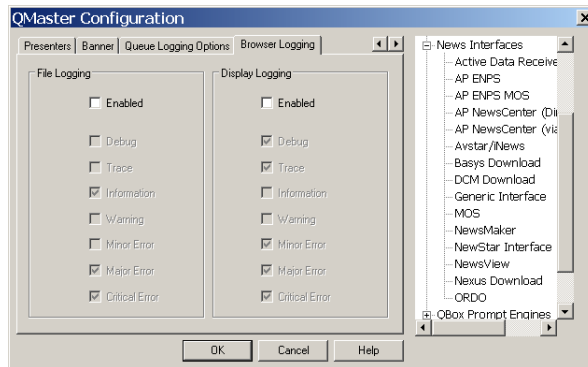
### Browser logging.

If you are using the new FTP interface to an iNews server, you can also set up logging of behaviour and performance of the browser while it is searching iNews runorders and scripts.

1. From the QMaster main menu bar, select **Tools >> Options... >> News Interfaces**.
2. Scroll down and select the **iNews** entry.



3. Click the **Browser Logging** tab to select information to be included in the log.



4. Select the appropriate **Enabled** checkbox depending on whether you want the information saved to a file or displayed on screen or both.

---

## SECTION 2: iNews Integration Configuration

The Avid iNEWS newsroom computer system provides complete control of newsroom operations. Desktop capture of wires and other data feeds and ordering rundowns to integration with playback control systems and production devices for precise control at air time.

Following installation and configuration of the Autocue software and hardware it is necessary to configure the RXNET resources on the iNews servers and then create users for prompting on the news system.

---

**NOTE:** The configuration of RXNET and the creation of users should be performed by iNews Administrators only.

---

### 2.1: Configure iNews server

Parameters must be set on the newsroom server sending runorder and script information to the Autocue prompting computer.

1. Open the queue to be prompted.
2. Double-click on the queue title bar to display the `Properties` panel.
3. Enter data appropriate for your network and working environment in the necessary fields.
4. Click `Apply` and then click `OK`.



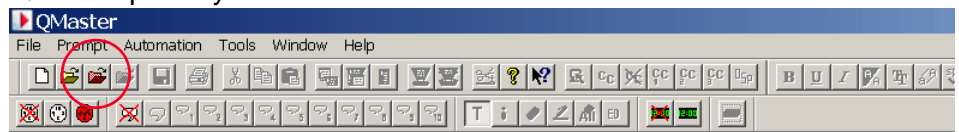
## SECTION 3: iNews Scripts in QMaster

After configuring the connection between the QMaster you have connected the WinCue machine to the AVSTAR network, as discussed in the previous sections, you will be able to open Runorders and scripts from the AVSTAR newsroom system. This section will explain how to open these AVSTAR scripts in WinCue.

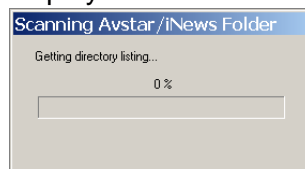
### 3.1: Select runorder to prompt

Once the interface has been correctly configured, you can open a queue and begin prompting scripts.

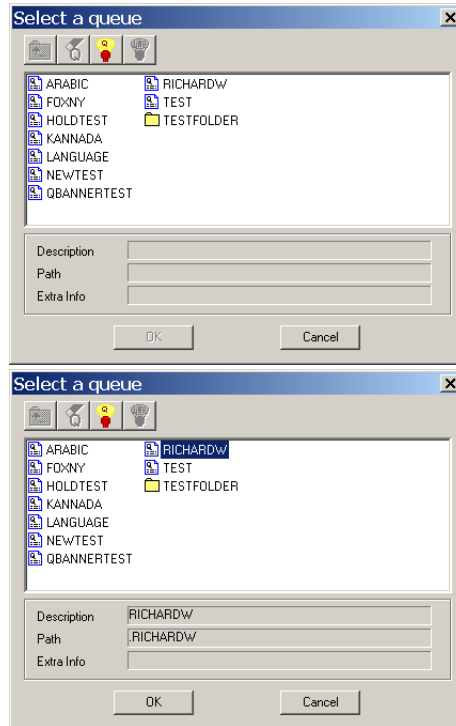
1. Open a queue by either selecting File >> Open Queue from the main menu bar or clicking the Open Queue button (the red folder icon) on the QMaster primary button bar.



2. A dialog box indicating the iNews server is being scanned will be displayed.



3. Select the required runorder from the list displayed.



4. You can select, edit and prompt the scripts and runorders in the same manner as scripts created within QMaster. For detailed information about editing and prompting scripts, refer to the latest version of the QMaster User Guide.

## SECTION 4: Sales and Support Information

### International Head Office

Autocue Group Ltd  
Unit 3, Puma Trade Park  
145 Morden Road  
Mitcham  
Surrey  
CR4 4DG  
UK

Tel:+44 20 8665 2992  
Fax: +44 20 8687 4869

e-mail:info@autocue.co.uk  
web:www.autocue.com

### Sales enquiries

Richard Satchell - Director International Prompter Sales and Rentals  
Tel:+44 20 8687 4858  
Fax: +44 20 8687 4869  
Mob:+44 77 2081 3897  
e-mail:sales@autocue.co.uk

Lee Spurway - Customer Service Manager  
Tel:+44 20 8687 4862  
Fax: +44 20 8687 4869  
e-mail:sales@autocue.co.uk

### Technical support

For technical support please use one or more of the following options.

#### Phone.

1. Call the main Autocue number:  
+44 20 8665 2992
2. Select the support option

3. Leave a message including as much detail about the problem as practical.

### **Email.**

1. Send an email to:  
support@autocue.co.uk  
Remember to include as much detail as possible. A phrase such as "Screen blank" makes it difficult for the support staff to diagnose a problem and will delay providing you with an answer.

### **Web site.**

1. Go to [www.autocue.com](http://www.autocue.com)
2. Select "Support" and then "Problem Form"
3. Complete the form and submit it.